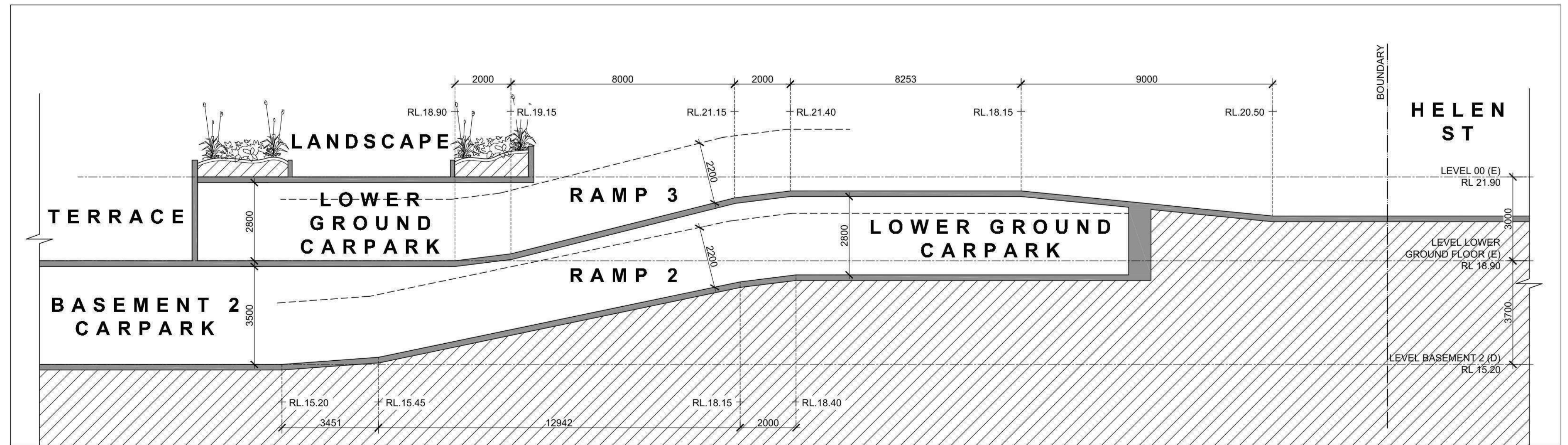
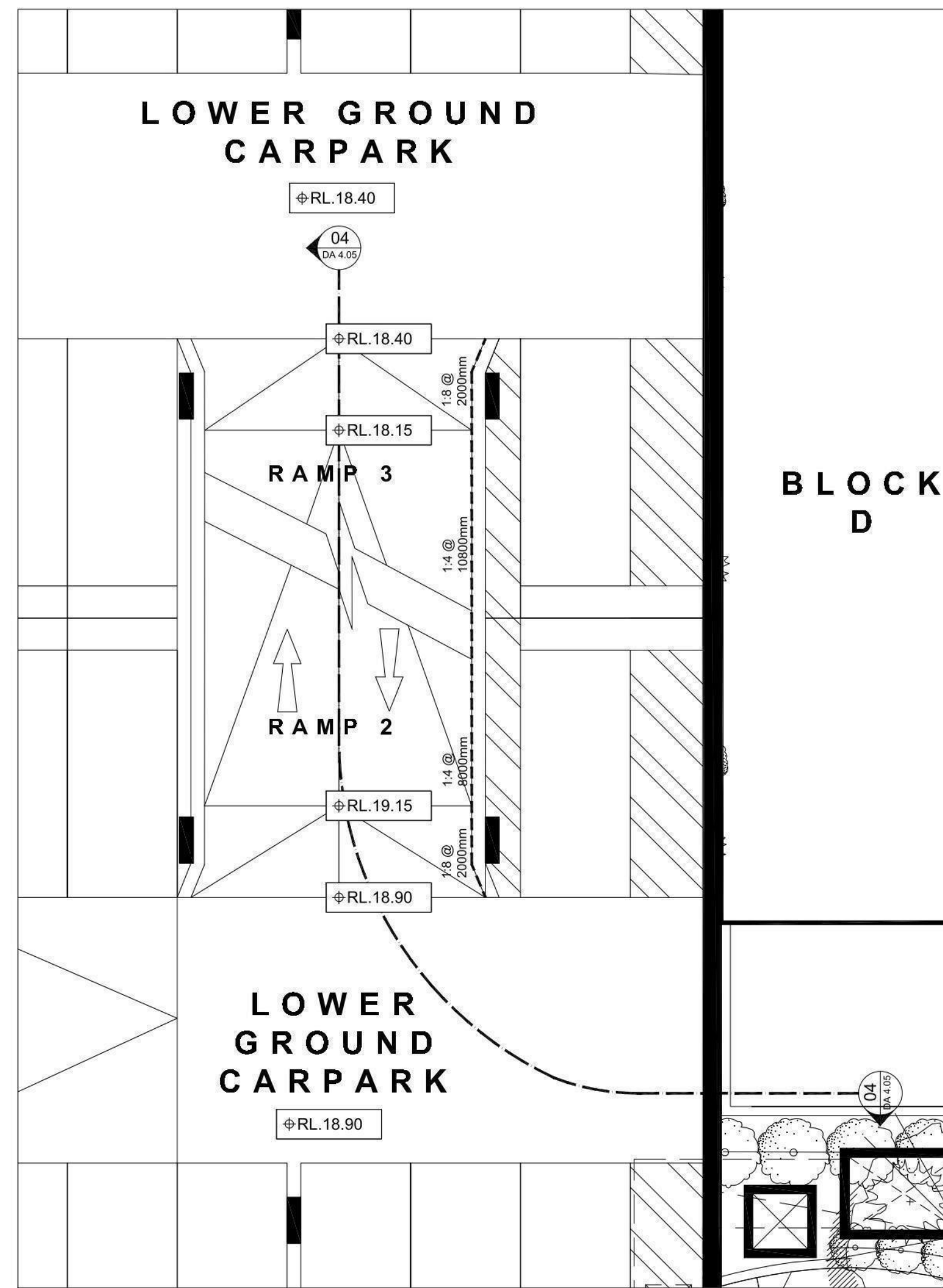


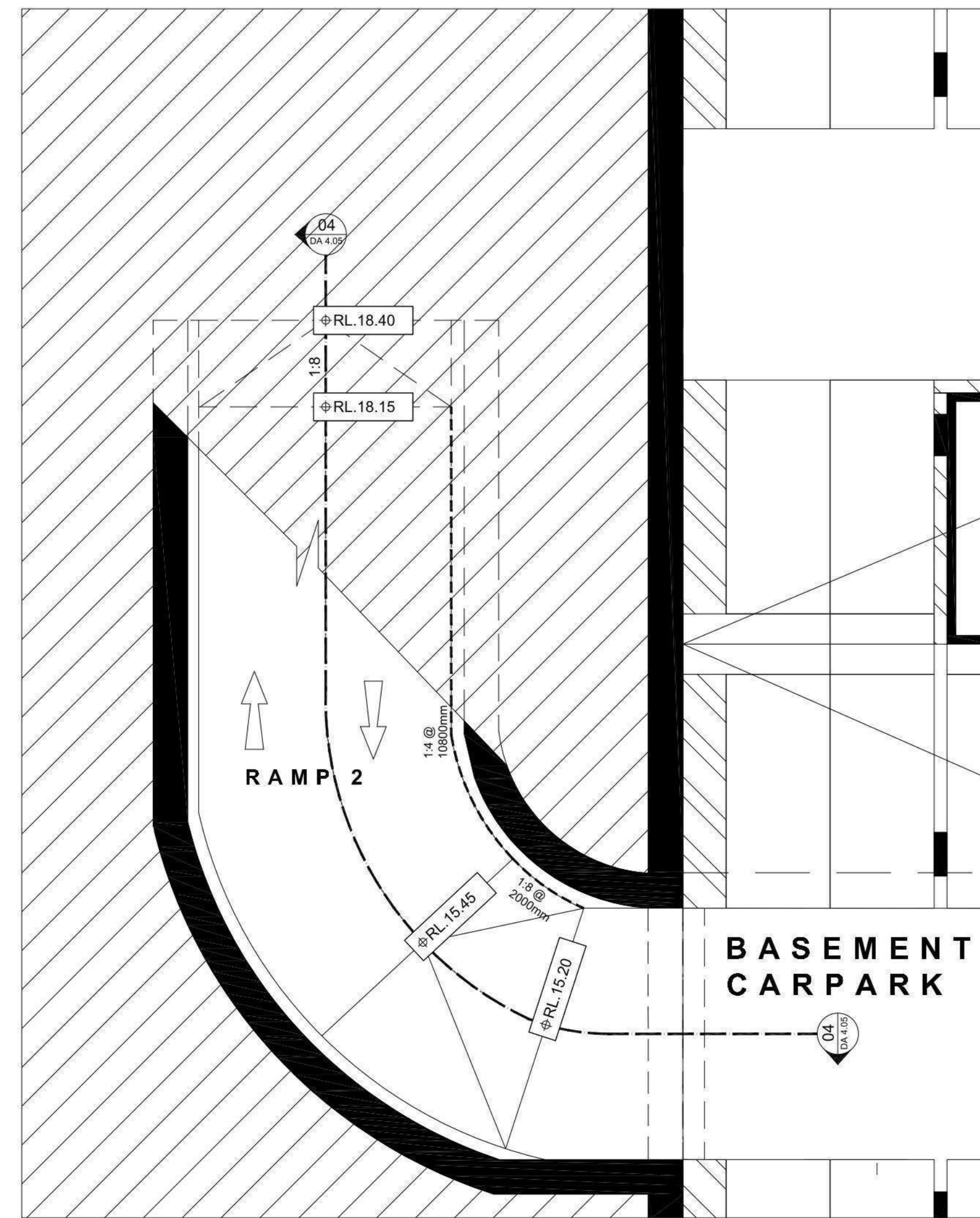
01 RAMP 3 PLAN
GROUND FLOOR DETAIL



04 RAMP 2+3 SECTION



02 RAMP 2+3 PLAN
LOWER GROUND FLOOR DETAIL



03 RAMP 2 PLAN
BASEMENT 2 DETAIL

IMPORTANT NOTES:
Do not scale from drawings. All dimensions to be checked on site before commencement of work. All discrepancies to be brought to the attention of the Architect. Larger scale drawings and written dimensions take preference. This drawing is copyright and the property of the author, and must not be retained, copied or used without the express authority of MARCHESE + PARTNERS INTERNATIONAL PTY. LTD.

PRELIMINARY

REVISION	DATE	DESCRIPTION	BY
A	08/05/15	DA SUBMISSION	AA

marchesepartners

Marchese Partners International Pty Ltd
Level 1, 53 Walker Street, North Sydney, NSW 2060 Australia
P +61 2 9922 4375 F +61 2 9929 5786 E info@marchesepartners.com.au
www.marchesepartners.com.au
Sydney · Brisbane · Melbourne · Canberra · San Francisco · Kuala Lumpur
ACN 098 552 151 ABN 20 098 552 151

CLIENT
UNITINGCARE AGEING

PROJECT
MAYFLOWER, PARK AVENUE
WESTMEAD REDEVELOPMENT

DRAWING TITLE
CARPARK RAMP DETAILS

SCALE	DATE	DRAWN	CHECKED
1:100@A1, 1:200@A3	05/05/2015	AA	RS
JOB	DRAWING	REVISION	
10033	DA 04.05	A	

EROSION AND SEDIMENT CONTROLS

- ES1 ALL WORK SHALL BE GENERALLY CARRIED OUT IN ACCORDANCE WITH:
- (A) LOCAL AUTHORITY REQUIREMENTS
 - (B) APPLICABLE - POLLUTION CONTROL MANUAL FOR URBAN STORMWATER
 - (C) DEPARTMENT OF CONSERVATION AND LAND MANAGEMENT MANUAL- "URBAN EROSION & SEDIMENT CONTROL".
 - (D) NSW PROTECTION OF THE ENVIRONMENT ACT 1997

ES2 THE CONTRACTOR SHALL PREPARE EROSION AND SEDIMENT CONTROL DRAWINGS AND NOTES FOR THE WHOLE OF THE WORKS. SHOULD THE CONTRACTOR STAGE THESE WORKS THEN THE DESIGN MAY REQUIRE TO BE MODIFIED. VARIATION TO THESE DETAILS MAY REQUIRE TO BE APPROVED BY THE RELEVANT AUTHORITIES. THE EROSION AND SEDIMENT CONTROL PLAN SHALL BE IMPLEMENTED AND ADOPTED TO MEET THE VARYING SITUATIONS AS WORK ON SITE PROGRESSES.

ES3 MAINTAIN ALL EROSION AND SEDIMENT CONTROL DEVICES TO THE SATISFACTION OF THE SUPERINTENDENT AND THE LOCAL AUTHORITY AS APPROPRIATE (IE. PRIVATE / PUBLIC LAND)

ES4 AS STORMWATER PITS ARE CONSTRUCTED PREVENT SITE RUNOFF ENTERING. ERECT SILT FENCES AROUND PITS.

ES5 MINIMISE THE AREA OF SITE DISTURBED AT ANY ONE TIME.

ES6 PROTECT ALL STOCKPILES OF MATERIALS FROM SCOUR AND EROSION. DO NOT STOCKPILE LOOSE MATERIAL IN ROADWAYS, NEAR DRAINAGE PITS OR IN WATERCOURSES.

ES7 ALL SOIL AND WATER CONTROL MEASURES ARE TO BE PUT BACK IN PLACE AT THE END OF EACH WORKING DAY, AND MODIFIED TO BEST SUIT SITE CONDITIONS.

ES8 CONTROL WATER FROM UPSTREAM OF THE SITE SO THAT IT DOES NOT ENTER THE DISTURBED SITE.

ES9 ALL CONSTRUCTION VEHICLES SHALL ENTER AND EXIT THE SITE VIA THE AGREED TEMPORARY CONSTRUCTION ENTRY/EXIT.

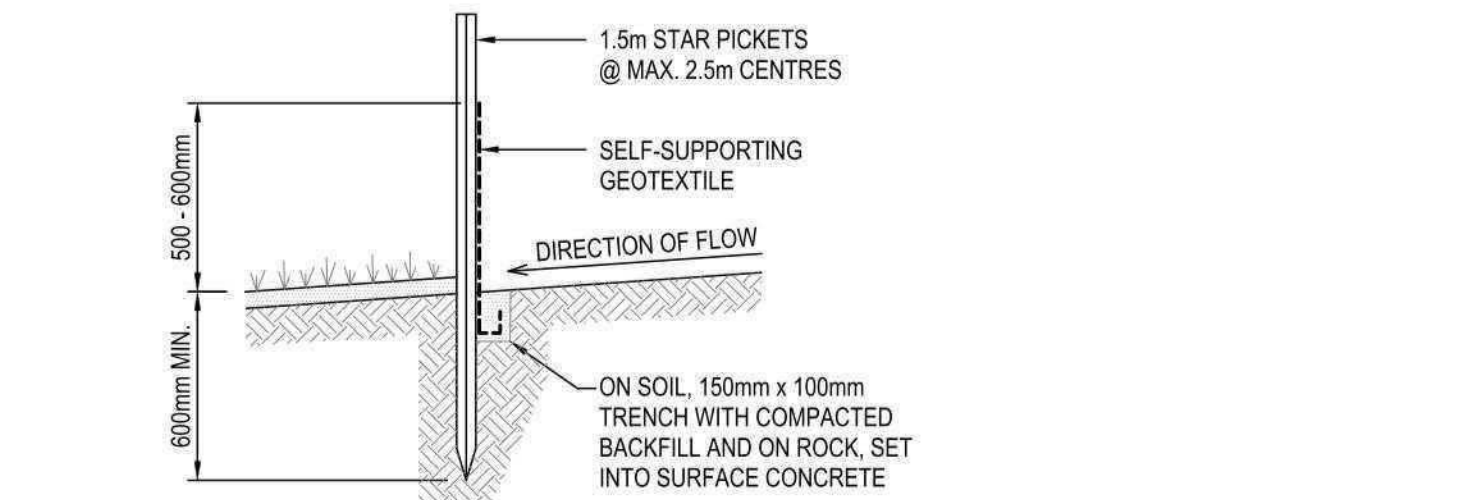
ES10 ALL VEHICLES ASSOCIATED WITH CIVIL WORKS SHALL BE CLEANED AND INSPECTED BY THE CONTRACTOR BEFORE LEAVING THE SITE.

ES11 MAINTAIN ALL STORMWATER PIPES AND PITS CLEAR OF DEBRIS AND SEDIMENT. THE CONTRACTOR SHALL INSPECT STORMWATER SYSTEM AND CLEAN OUT AFTER EACH STORM EVENT AND / OR WHEN DIRECTED

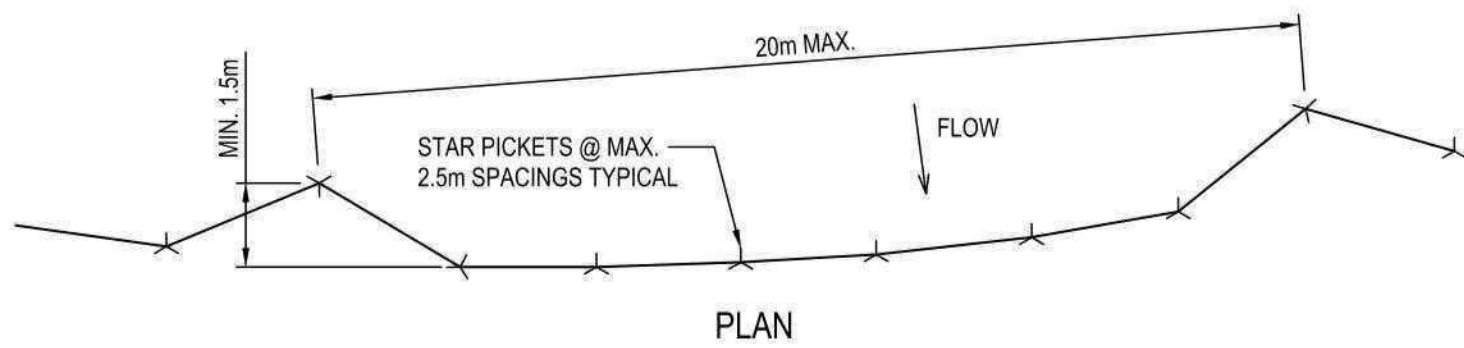
ES12 THE CONTRACTOR SHALL CLEAN OUT ALL EROSION AND SEDIMENT CONTROL DEVICES AFTER EACH STORM EVENT.

SEQUENCE OF WORKS

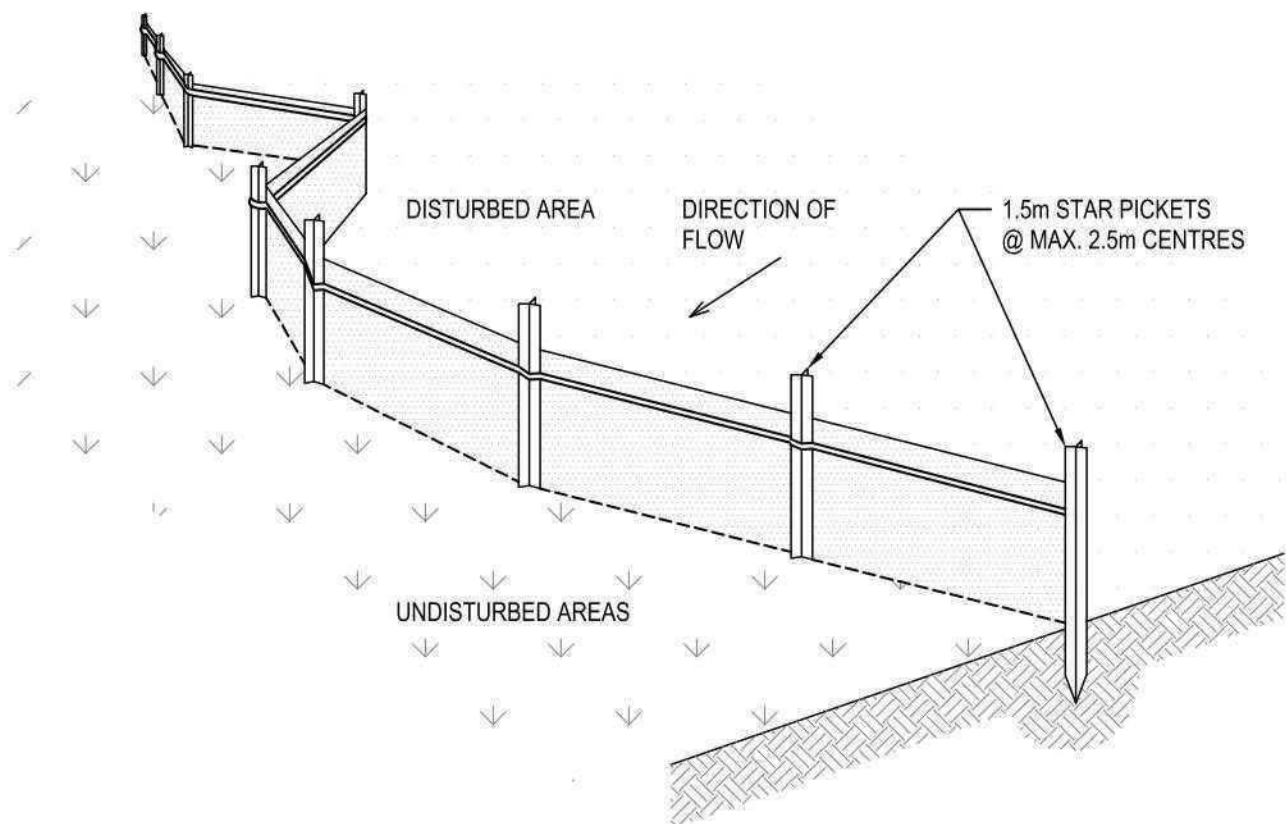
- SQ1 PRIOR TO COMMENCEMENT OF EXCAVATION THE FOLLOWING SOIL MANAGEMENT DEVICES MUST BE INSTALLED.
- (A) CONSTRUCT ALL SILT FENCES BELOW THE SITE AND ACCROSS ALL POTENTIAL RUNOFF SITES
 - (B) CONSTRUCT TEMPORARY CONSTRUCTION ENTRY / EXIT AND DIVERT RUNOFF TO SUITABLE CONTROL SYSTEMS
 - (C) CONSTRUCT MEASURES TO DIVERT UPSTREAM FLOWS AROUND WORK(S) AREAS
 - (D) CONSTRUCT SEDIMENTATION TRAPS / BASIN INCLUDING OUTLET CONTROL AND OVERFLOW
 - (E) PROVIDE SAND BAG SEDIMENT TRAPS / GRAVEL SEDIMENT SAUSAGE UPSTREAM OF EXISTING PITS
- SQ2 CONSTRUCT GEOTEXTILE FILTER PIT SURROUND AROUND ALL PROPOSED PITS AS THEY ARE CONSTRUCTED
- SQ3 ON COMPLETION OF PAVEMENT PROVIDE GRAVEL SAUSAGE AT KERB INLET PITS.



SECTION DETAIL



PLAN

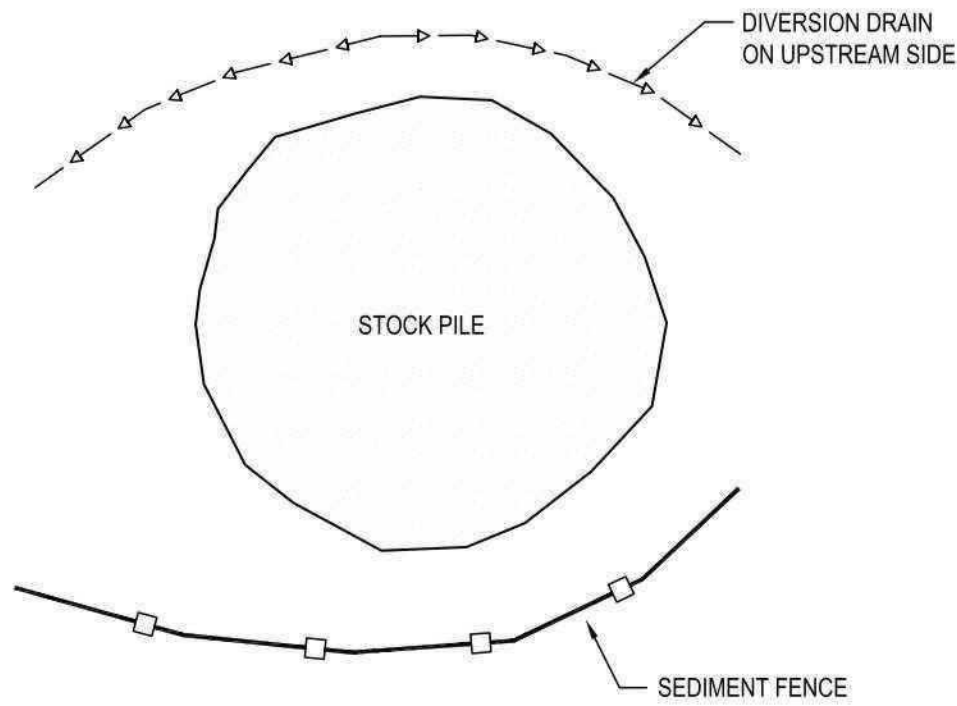


SEDIMENT FENCE

SCALE N.T.S.

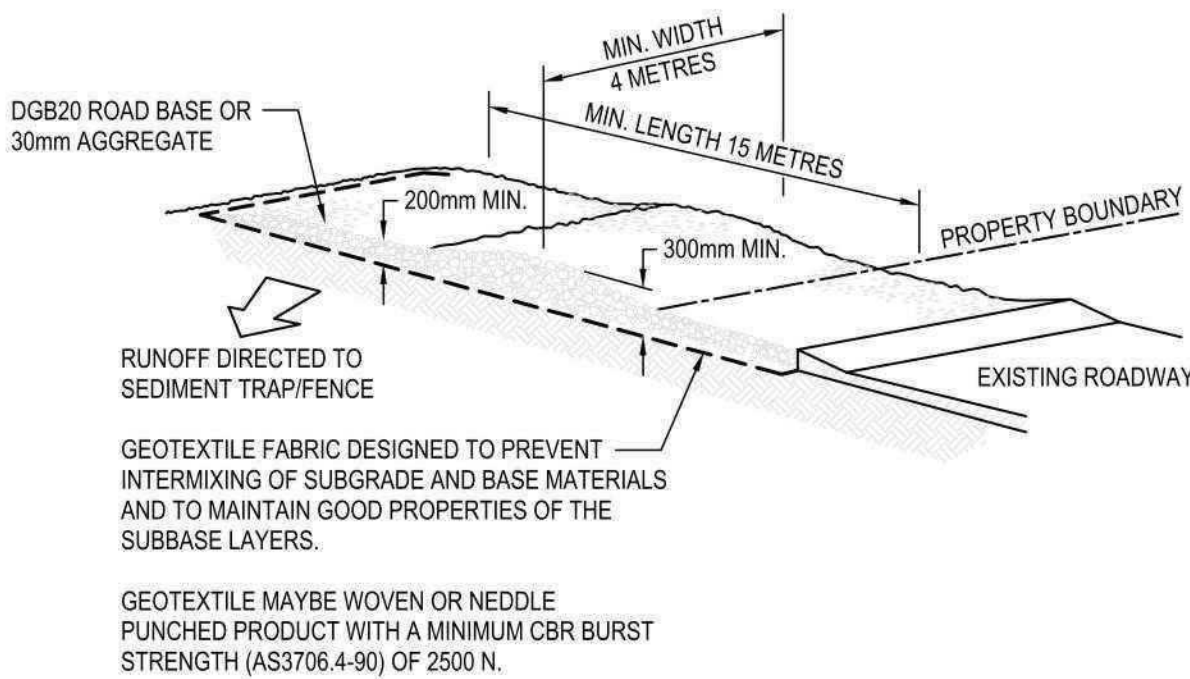
SEDIMENT FENCE CONSTRUCTION NOTES:

1. CONSTRUCT SEDIMENT FENCES AS CLOSE AS POSSIBLE TO BEING PARALLEL TO THE CONTOURS OF THE SITE, BUT WITH SMALL RETURNS AS SHOWN IN THE DRAWING TO LIMIT THE CATCHMENT AREA OF ANY ONE SECTION. THE CATCHMENT AREA SHOULD BE SMALL ENOUGH TO LIMIT WATER FLOW IF CONCENTRATED AT ONE POINT TO 50 LITRES PER SECOND IN THE DESIGN STORM EVENT, USUALLY THE 10-YEAR EVENT.
2. CUT A 150mm DEEP TRENCH ALONG THE UPSLOPE LINE OF THE FENCE FOR THE BOTTOM OF THE FABRIC TO BE ENTRENCHED.
3. DRIVE 1.5m LONG STAR PICKETS INTO GROUND @ 2.5m INTERVALS (MAX.) AT THE DOWNSLOPE EDGE OF THE TRENCH. ENSURE ANY STAR PICKETS ARE FITTED WITH SAFETY CAPS.
4. FIX SELF-SUPPORTING GEOTEXTILE TO THE UPSLOPE SIDE OF THE POSTS ENSURING IT GOES TO THE BASE OF THE TRENCH. FIX THE GEOTEXTILE WITH WIRE TIES OR AS RECOMMENDED BY THE MANUFACTURER. ONLY USE GEOTEXTILE SPECIFICALLY PRODUCED FOR SEDIMENT FENCING. THE USE OF SHADE CLOTH FOR THIS PURPOSE IS NOT SATISFACTORY.
5. JOIN SECTIONS OF FABRIC AT A SUPPORT POST WITH A 150mm OVERLAP.
6. BACKFILL THE TRENCH OVER THE BASE OF THE FABRIC AND COMPACT IT THOROUGHLY OVER THE GEOTEXTILE.



STOCKPILE PLAN

SCALE N.T.S.

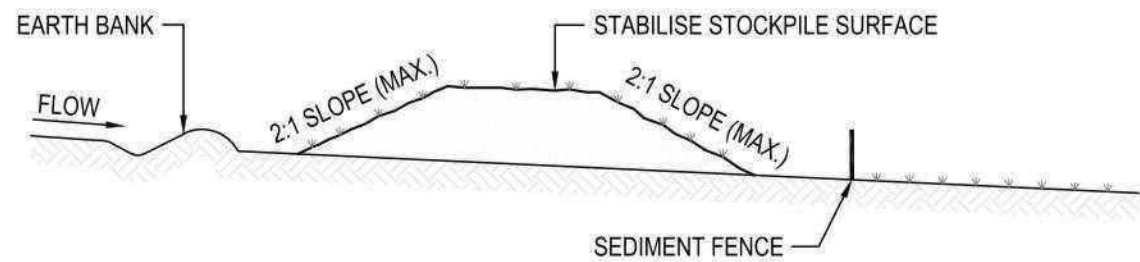


STABILISED SITE ACCESS CONSTRUCTION NOTES:

1. STRIP THE TOPSOIL, LEVEL THE SITE AND COMPACT THE SUBGRADE.
2. COVER THE AREA WITH NEEDLE - PUNCHED GEOTEXTILE.
3. CONSTRUCT A 200mm THICK PAD OVER THE GEOTEXTILE USING ROAD BASE OR 30mm AGGREGATE.
4. ENSURE THE STRUCTURE IS AT LEAST 15 METRES LONG OR TO BUILDING ALIGNMENT AND AT LEAST 3 METRES WIDE.
5. WHERE A SEDIMENT FENCE JOINS ONTO THE STABILISED ACCESS. CONSTRUCT A HUMP IN THE STABILISED ACCESS TO DIVERT WATER TO SEDIMENT FENCE.

STABILISED SITE ACCESS

SCALE N.T.S.

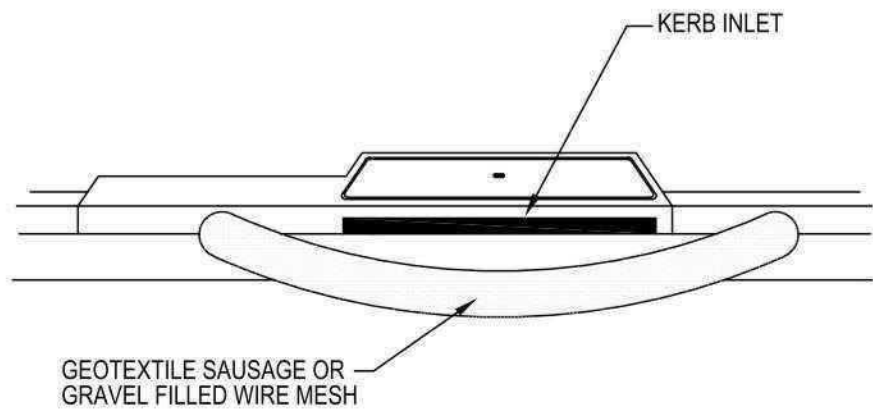


STOCKPILE CONSTRUCTION NOTES:

1. PLACE STOCKPILES MORE THAN 2 (PREFERABLY 5) METRES FROM EXISTING VEGETATION, CONCENTRATED WATER FLOW, ROADS AND HAZARD AREAS.
2. CONSTRUCT ON THE CONTOUR AS LOW, FLAT, ELONGATED MOUNDS.
3. WHERE THERE IS SUFFICIENT AREA, TOPSOIL STOCKPILES SHALL BE LESS THAN 2 METRES IN HEIGHT.
4. WHERE THEY ARE TO BE PLACED FOR MORE THAN 10 DAYS, STABILISE FOLLOWING THE APPROVED E.S.C.P. OR S.W.M.P. TO REDUCE THE C-FACTOR TO LESS THAN 0.10.
5. CONSTRUCT EARTH BANKS ON THE UPSLOPE SIDE TO DIVERT WATER AROUND STOCKPILES AND SEDIMENT FENCES 1 TO 2 METRES DOWNSLOPE.

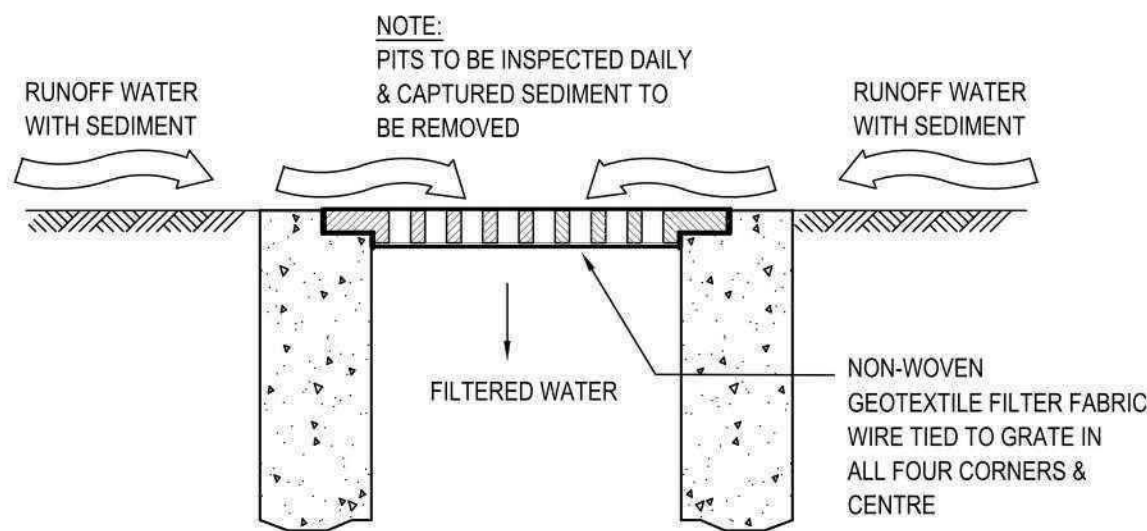
STOCKPILE SECTION

SCALE N.T.S.



GRAVEL SAUSAGE

SCALE N.T.S.



INLET TRAP

SCALE N.T.S.

NOTE:
TO BE USED IN PAVED AREAS
WHERE TRAFFIC ACCESS IS REQUIRED

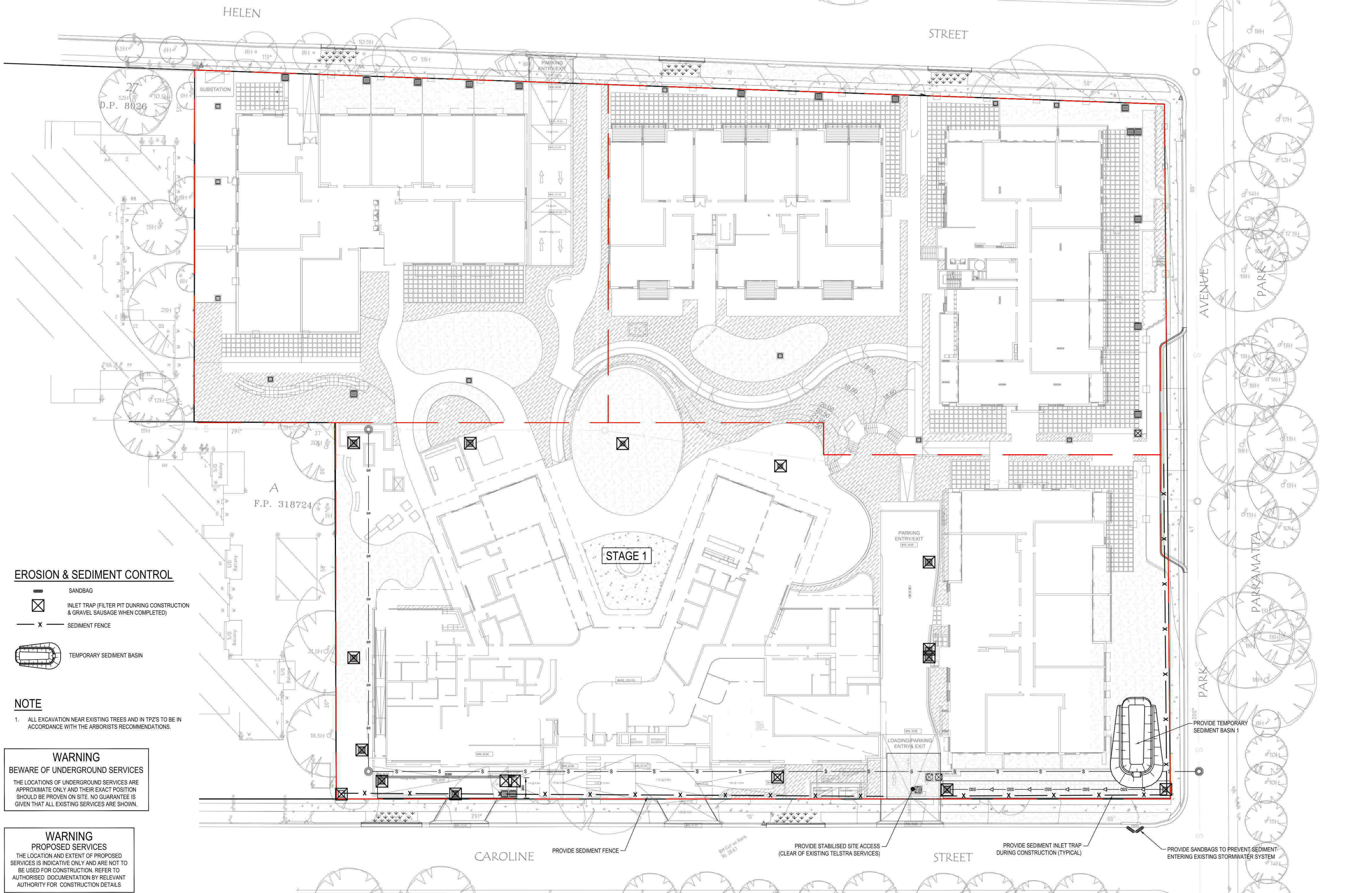
REV	DESCRIPTION	BY	APP	DATE
A	ISSUED FOR COORDINATION	GD	EE	11.11.14
B	ISSUED FOR DA APPROVAL	JSW	MAC	06.02.15
C	ISSUED FOR DA APPROVAL	AS	MAC	23.02.15





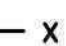
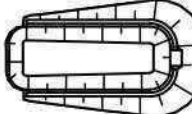
Level 4, 66 Clarence Street
Sydney NSW 2000
Telephone: (02) 9699 3088
Fax: (02) 9319 7508
www.meinhardtgroup.com
A.C.N. 051 627 591
© Copyright

CLIENT	UNITINGCARE AGEING
DESIGNED	EE
DRAWN	RL
APPROVED	SCALE @ A1
STATUS	DA APPROVAL NOT FOR CONSTRUCTION

PROJECT	MAYFLOWER VILLAGE REDEVELOPMENT WESTMEAD	NORTH	REV
TITLE	EROSION & SEDIMENT CONTROL DETAILS	PROJECT No	108157-00- MIE020
DRAWING No		REV	C



EROSION & SEDIMENT CONTROL

-  SANDBAG
-  INLET TRAP (FILTER PIT DURING CONSTRUCTION & GRAVEL SAUSAGE WHEN COMPLETED)
-  SEDIMENT FENCE
-  TEMPORARY SEDIMENT BASIN

NOTE

- ALL EXCAVATION NEAR EXISTING TREES AND IN TPZ'S TO BE IN ACCORDANCE WITH THE ARBORISTS RECOMMENDATIONS.

**WARNING
BEWARE OF UNDERGROUND SERVICES**

THE LOCATIONS OF UNDERGROUND SERVICES ARE APPROXIMATE ONLY AND THEIR EXACT POSITION SHOULD BE PROVEN ON SITE. NO GUARANTEE IS GIVEN THAT ALL EXISTING SERVICES ARE SHOWN.

**WARNING
PROPOSED SERVICES**

THE LOCATION AND EXTENT OF PROPOSED SERVICES IS INDICATIVE ONLY AND ARE NOT TO BE USED FOR CONSTRUCTION. REFER TO AUTHORISED DOCUMENTATION BY RELEVANT AUTHORITY FOR CONSTRUCTION DETAILS

REV	DESCRIPTION	BY	APP	DATE
A	ISSUED FOR COORDINATION	GD	EE	11.11.14
B	ISSUED FOR DA APPROVAL	JSW	MAC	06.02.15
C	ISSUED FOR DA APPROVAL	AS	MAG	03.02.15

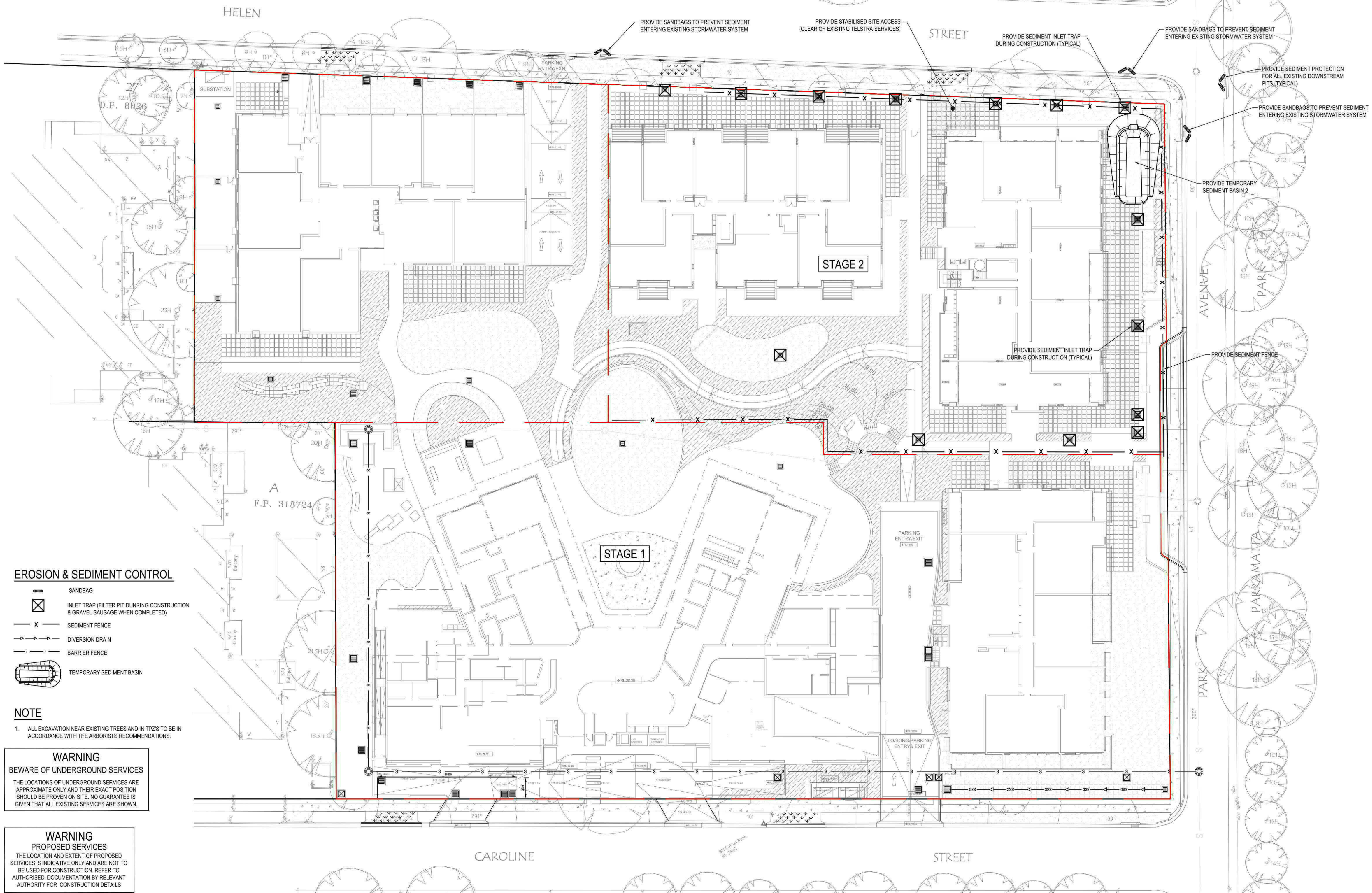


Level 4, 66 Clarence Street
Sydney NSW 2000
Telephone: (02) 9599 3088
Fax: (02) 9319 7508
www.meinhardtgroup.com
A.C.N. 051 627 591
©Copyright

CLIENT	UNITINGCARE AGEING
DESIGNED	DRAWN
EE	RL
APPROVED	SCALE @ A1
	1:250
STATUS	DA APPROVAL NOT FOR CONSTRUCTION

PROJECT	MAYFLOWER VILLAGE REDEVELOPMENT WESTMEAD
TITLE	EROSION & SEDIMENT CONTROL PLAN - STAGE 1 WORKS
PROJECT No	108157-00- MIE021
DRAWING No	
REV	C





EROSION & SEDIMENT CONTROL

- SANDBAG
- INLET TRAP (FILTER PIT DURING CONSTRUCTION & GRAVEL SAUSAGE WHEN COMPLETED)
- SEDIMENT FENCE
- DIVERSION DRAIN
- BARRIER FENCE
- TEMPORARY SEDIMENT BASIN

NOTE

1. ALL EXCAVATION NEAR EXISTING TREES AND IN TPZ'S TO BE IN ACCORDANCE WITH THE ARBORISTS RECOMMENDATIONS.

WARNING
BEWARE OF UNDERGROUND SERVICES

THE LOCATIONS OF UNDERGROUND SERVICES ARE APPROXIMATE ONLY AND THEIR EXACT POSITION SHOULD BE PROVEN ON SITE. NO GUARANTEE IS GIVEN THAT ALL EXISTING SERVICES ARE SHOWN.

WARNING
PROPOSED SERVICES

THE LOCATION AND EXTENT OF PROPOSED SERVICES IS INDICATIVE ONLY AND ARE NOT TO BE USED FOR CONSTRUCTION. REFER TO AUTHORISED DOCUMENTATION BY RELEVANT AUTHORITY FOR CONSTRUCTION DETAILS

DWG FILE: V:\108157 - Mayflower Village Westmead\BIM\3_MHT\MEG_3_2_MHT\108157-00-MIE021-23.dwg - MHT PLOT TIME: 24 Feb 2015, 11:58am

REV	DESCRIPTION	BY	APP	DATE
A	ISSUED FOR COORDINATION	QD	EE	11.11.14
B	ISSUED FOR DA APPROVAL	JSW	MAC	06.02.15
C	ISSUED FOR DA APPROVAL	AS	MAC	03.02.15



Level 4, 66 Clarence Street
Sydney NSW 2000
Telephone: (02) 9699 3088
Fax: (02) 9319 7508
www.meinhardtgroup.com
A.C.N. 051 627 591
©Copyright

CLIENT	UNITINGCARE AGEING		
DESIGNED	DRAWN	APPROVED	SCALE @ A1
EE	RL		1:250
STATUS	DA APPROVAL NOT FOR CONSTRUCTION		

PROJECT	MAYFLOWER VILLAGE REDEVELOPMENT WESTMEAD		
TITLE	EROSION & SEDIMENT CONTROL PLAN - STAGE 2 WORKS		
PROJECT No	108157-00- MIE022		DRAWING No
REV	C		

